

Estimator

DFS CONTRACTOR: THE KEY TO BETTER ESTIMATING

Performing accurate takeoffs for your estimates is critical for good bids. Acquiring the documents needed for the takeoffs, and keeping up with the changes is one of the most difficult aspects of estimating. Now, ReproMAX brings you a solution to drastically reduce the time and effort required for estimating with DFS Contractor. DFS Contractor provides the easiest and most efficient process for performing quality takeoffs by integrating with the industry's best online takeoff tools.

Electronic Plans Available 24/7

Electronic takeoff and estimating technology provides the fastest and most accurate way to perform takeoffs. DFS Contractor integrates with the best Online Takeoff tools in the market to bring electronic takeoff capability to your fingertips.

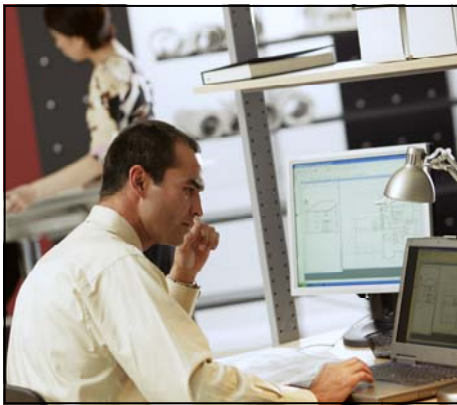
With DFS Contractor, you will have immediate access to the most current electronic copies of the project plans. You can quickly access the documents that you need from the DFS Online Plan Room. Just find the project you want and click "Create Takeoff" and the files are downloaded from DFS Contractor into the online takeoff tool.

The downloaded documents retain the same folder structure used in the Online Plan Room to provide you with an easy and organized way to find the documents you need. Simply, find the documents you need and perform your takeoffs.

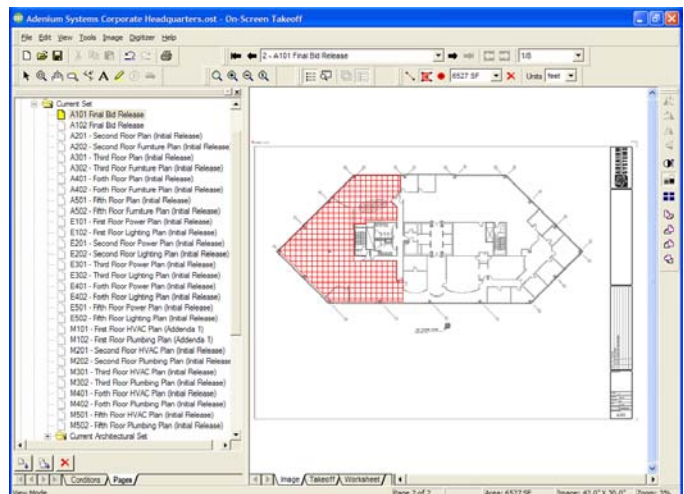
Increased Efficiency

The DFS plan room provides immediate access to any document necessary within minutes after its release. You no longer have to spend time driving around town to pick up drawings, addendums, or missing documents. Put an end to countless hours of manual takeoff labor.

Online takeoffs allow estimators to work faster and more efficiently. Area calculations, linear measurements, and unit counts can be quickly calculated electronically and saved for later review.



Access your project plans from the DFS Online Plan Room and download them into your electronic takeoff tool



Perform electronic takeoffs for fast and accurate estimates

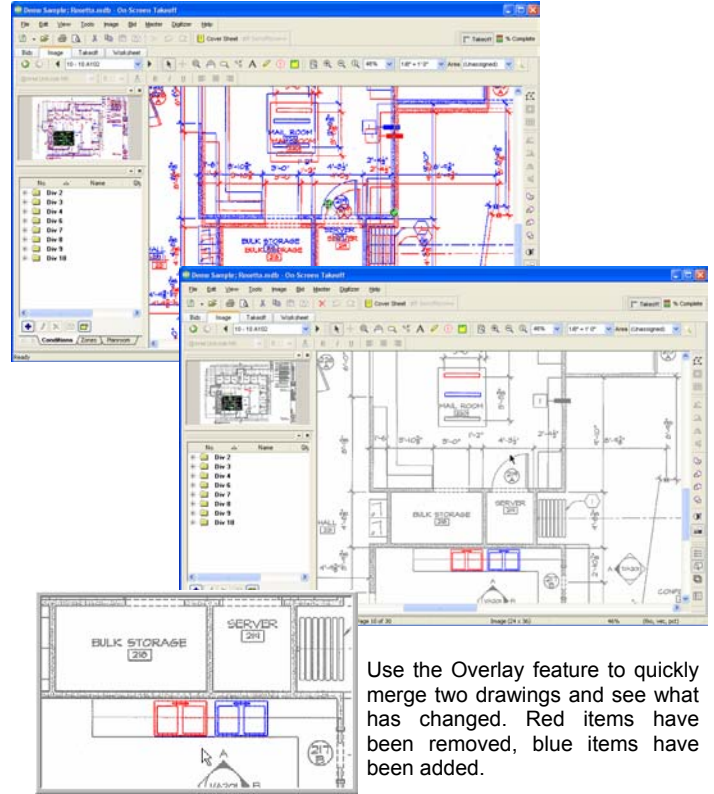
Greater Bid Accuracy

By using DFS Contractor's integration with online takeoff tools, you will have more accurate estimates. With online takeoff tools, linear and area measurements are automatically scaled from the original project drawing. No more manual calculations or measuring. Complex floor plans can be quickly measured in a matter of seconds with 100% accuracy.

For complex drawings, individual takeoff conditions can be turned on and off for clarity. This prevents errors caused by complex drawings.

The use of color coding and unique shapes allow for the jobs to be coordinated by phase or type of work. For multi-phase projects this allows for better phased cost estimates.

Once the takeoff has been completed, labor, material, and other costs can be entered to calculate the total estimate amount. When changes are released, it only takes a few clicks to calculate a new estimate and submit a new bid.



Faster Response to Changes

How many times has a significant change been released just days before a major bid is due? Instead of scrambling to review all drawing changes and performing all new takeoffs, you can simply open the original takeoff and update the conditions that have changed. You can use the overlay feature to quickly see what has changed between two drawings.

If a wall has moved, simply grab the wall's takeoff and move it to the new position. If additional outlets have been added, simply select the outlet condition and click on the new outlets. Minutes later your bid is ready for submission.

By using tools such as DFS Contractor and Online Takeoff, the accuracy of projects will be increased, and the time and cost will be reduced.



To learn more:

For a free demonstration of this and other ReproMAX solutions, contact your local ReproMAX member or visit www.repromax.com.

Visit <http://www.repromax.com/locator.asp> to find your nearest ReproMAX member.



7711 Bonhomme Avenue
Clayton, Missouri 63105
Phone: (800) 873-7762